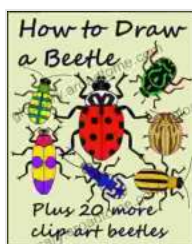


Unveiling the Secrets: How to Draw Beetles

The world of insects is teeming with an array of captivating creatures, and among them, beetles stand out as true wonders of nature. Their metallic exoskeletons shimmer with iridescent hues, their intricate patterns resembling miniature works of art. If you've ever marveled at the beauty of these tiny beings and aspired to capture their essence through drawing, this guide will serve as your trusted companion on this artistic adventure.



How to Draw a Beetle by George Howard

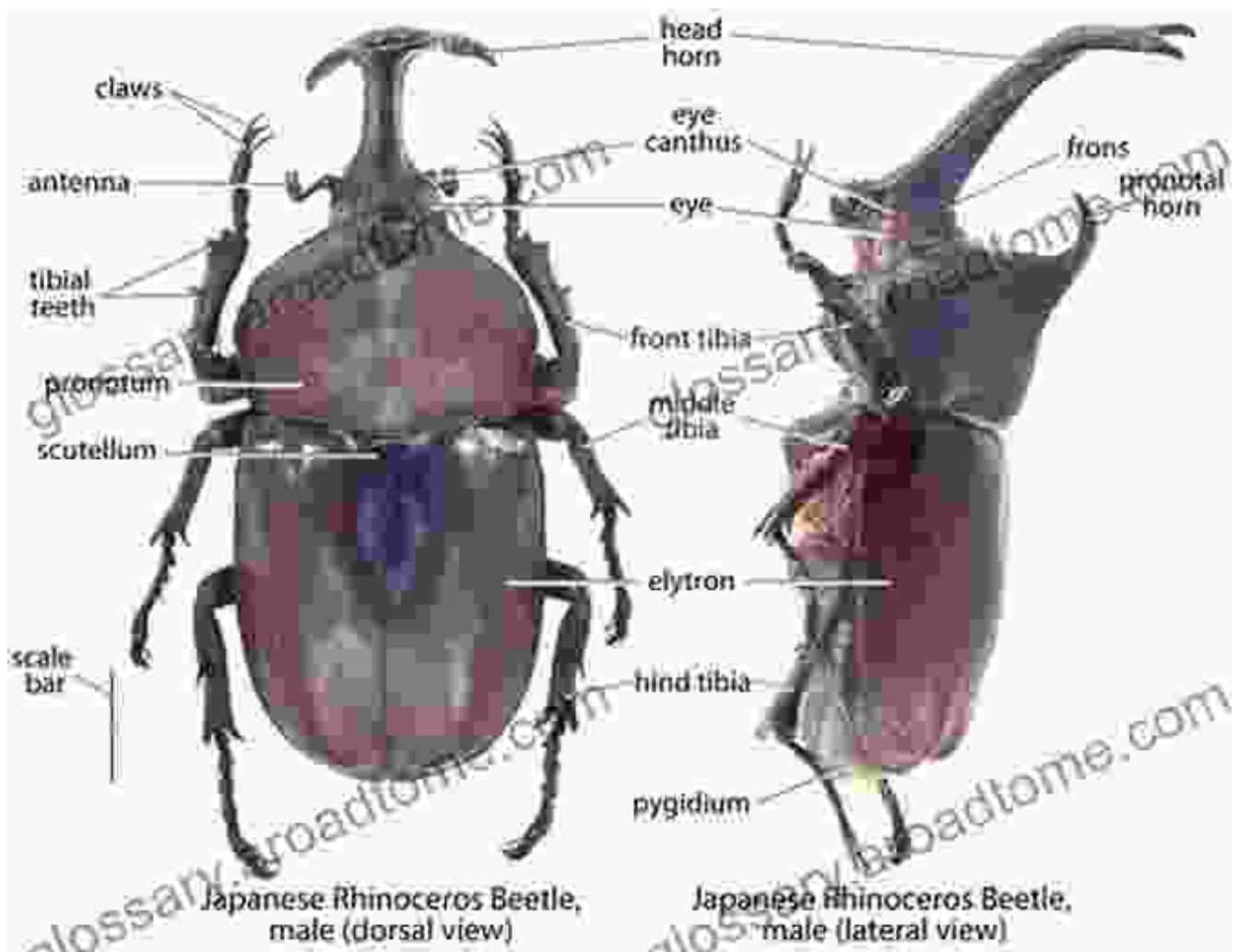
★★★★★ 5 out of 5

Language : English
File size : 1443 KB
Text-to-Speech : Enabled
Enhanced typesetting : Enabled
Print length : 32 pages
Screen Reader : Supported



Understanding Beetle Anatomy

To embark upon drawing beetles, it's crucial to familiarize yourself with their unique anatomy. Their bodies are divided into three distinct regions: the head, thorax, and abdomen. The head houses the antennae, eyes, and mandibles, while the thorax supports the legs and wings. The abdomen contains the digestive and reproductive organs.



Essential Drawing Materials

Before embarking on your drawing journey, gather the essential tools: a set of pencils with varying lead grades (e.g., HB, 2B, 6B), an eraser for blending and refining, and a sketchpad with smooth, acid-free paper.

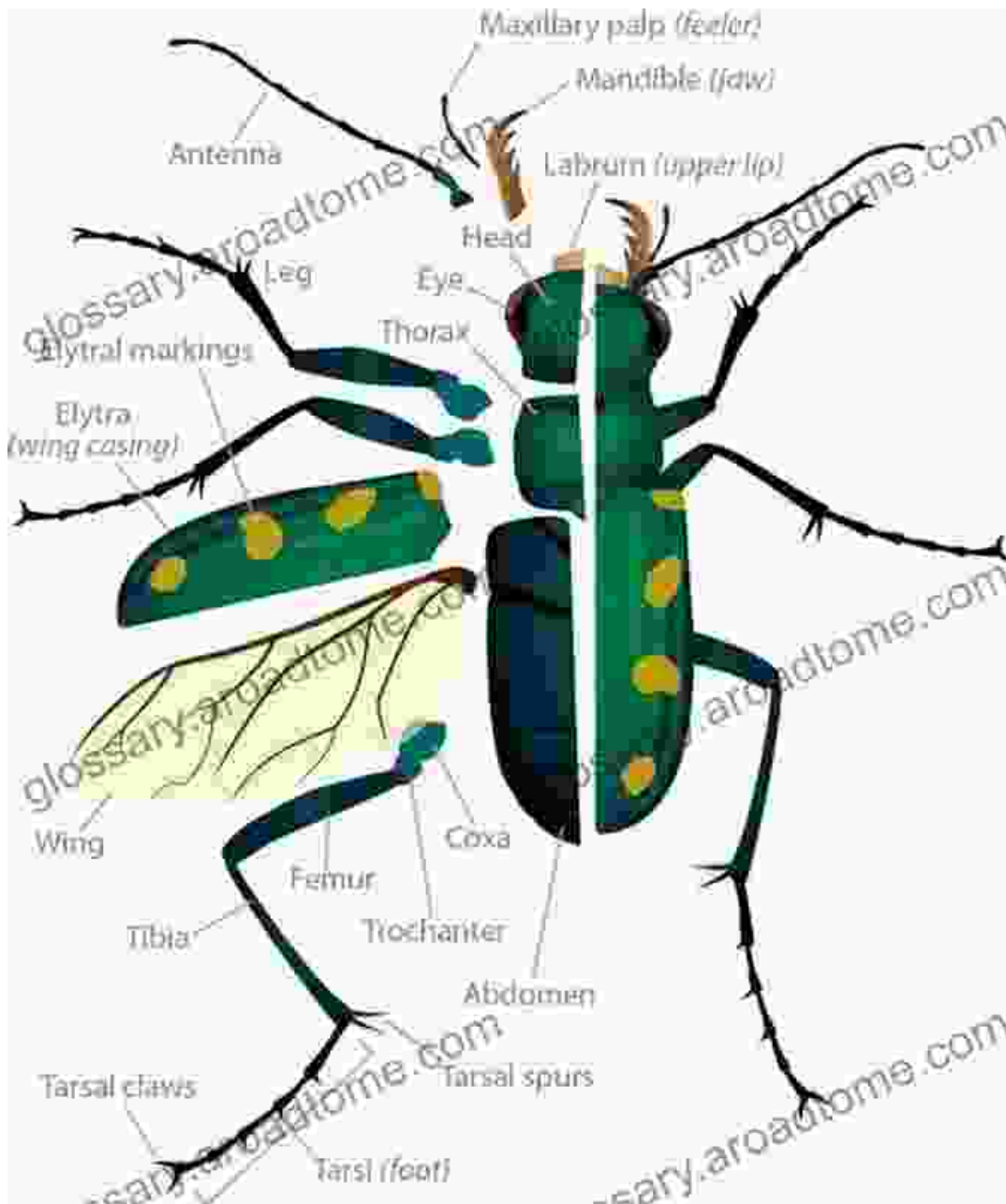
Capturing the Beetle's Form

Begin by sketching the beetle's overall shape. Use light, fluid strokes to outline the contours of its body, keeping the proportions in mind. Pay attention to the characteristic curvature of the thorax and the segmentation of the abdomen.



Adding Texture and Details

Once the basic form is established, it's time to add texture and finer details. Use a harder pencil (e.g., HB) to create sharp lines for the antennae, legs, and wing veins. Softer pencils (e.g., 2B, 6B) will allow you to blend and create smooth transitions in areas like the head and thorax.



Mastering Beetle Colors

Beetles exhibit a vast array of colors, from iridescent greens and blues to metallic reds and golds. To capture these vibrant hues, consider using colored pencils or markers. Experiment with different layering techniques and blending tools to achieve realistic color gradients.

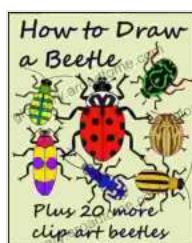


Tips for Drawing Different Beetle Species

While the general principles of drawing beetles remain the same, different species possess unique characteristics. Here are some tips for capturing their distinct traits:

- **Ladybugs:** Known for their striking red and black coloration, ladybugs have seven spots on their wing covers. Pay attention to the curved shape of their bodies.
- **Stag Beetles:** These beetles are characterized by their impressive mandibles. Draw their exaggerated jaws with precise lines, capturing their intricate serrations.
- **Japanese Beetles:** With their metallic green bodies and iridescent copper wing covers, Japanese beetles are a challenge to draw. Use a variety of pencil grades to convey the subtle color variations.

Drawing beetles is an enriching and rewarding artistic pursuit that allows you to connect with the wonders of the natural world. By understanding their anatomy, mastering the essential techniques, and paying attention to their unique characteristics, you can create stunning drawings that capture the beauty and diversity of these fascinating creatures. Whether you're a seasoned artist or a budding naturalist, embark on this journey and discover the hidden artistry within the world of beetles.



How to Draw a Beetle by George Howard

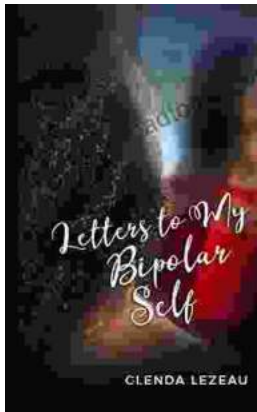
★★★★★ 5 out of 5

Language : English
File size : 1443 KB
Text-to-Speech : Enabled
Enhanced typesetting : Enabled
Print length : 32 pages
Screen Reader : Supported

FREE

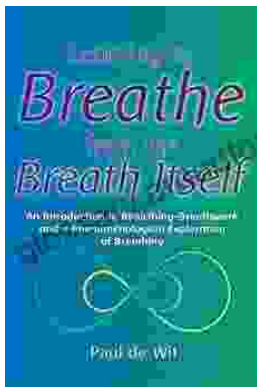
DOWNLOAD E-BOOK





Letters to My Bipolar Self: A Journey of Hope, Healing, and Acceptance

Bipolar disorder is a serious mental illness that can cause extreme mood swings, from mania to depression. It can be a devastating...



Learning to Breathe from the Breath Itself: A Transformative Guide to Mindfulness and Well-being

In the whirlwind of modern life, finding moments of peace and tranquility can seem like a distant dream. However, within the depths of our own being lies a tool that holds...